

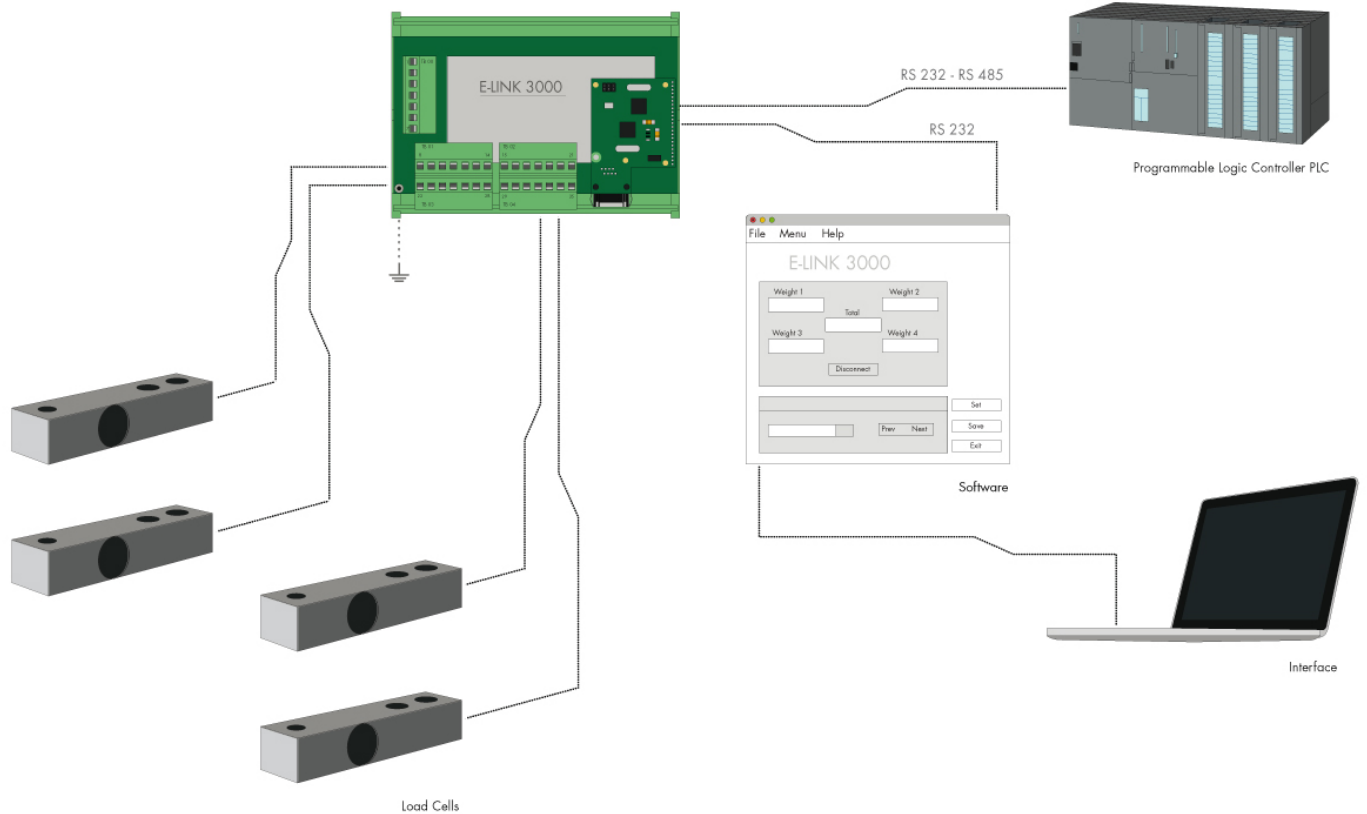
- 5 different electronic configurations
- 5 different cases for all system requirements
- Field and remote fault diagnostics
- Remote configuration from a PC (via software) or directly from the Master via the communication protocol
- Integrable in any industrial system of regulation and supervision
- Cell failure emulation function (excluding the weighing system with automatic recalibration)
- Troubleshooting on the load cells via local diagnosis and remote check

TECHNICAL CHARACTERISTICS E LINK 3000



Temperature range:	-10 ÷ +50°C
Storage temperature:	-20 ÷ +70 °C
Power supply:	12 ÷ 24 Vcc
Load cell power supply:	5 Vcc
Input signal cells:	measurement range of -5 mV/V to +5 mV/V
A/D converter:	24 bits
Internal resolution:	> of 16,000,000 points
Resolution 2 mV/V:	> 3.000.000 points on each cell's channel
Input sensitivity:	0.003 micronV/division
Readings per second per cell:	from 0.1 to 72 based on the number of cell's channels activated and to the value of digital filter
Linearity:	>0.01% F.S.
Thermal drift:	>0.003% F.S./°C
Serial port:	COM1: RS232 (for configuration parameters from a PC) COM2: RS485 with Modbus RTU protocol Profibus-DP DeviceNet CANOpen Modbus TCP su Ethernet
Electrical connections:	Load cells: 7 poles removable terminal blocks 5 mm diam Power: 7 poles removable terminal blocks 5mm diam Profibus-DP: 9-pin D-sub connector DeviceNet 5 poles removable terminal blocks CANOpen: 9 poles D-sub connector Ethernet: RJ-45 connector
Dimensions:	130x100x60 mm (WxHxD) card of support for DIN rail
CE Conformity:	EN 61000-6-3, EN 61000-6-2





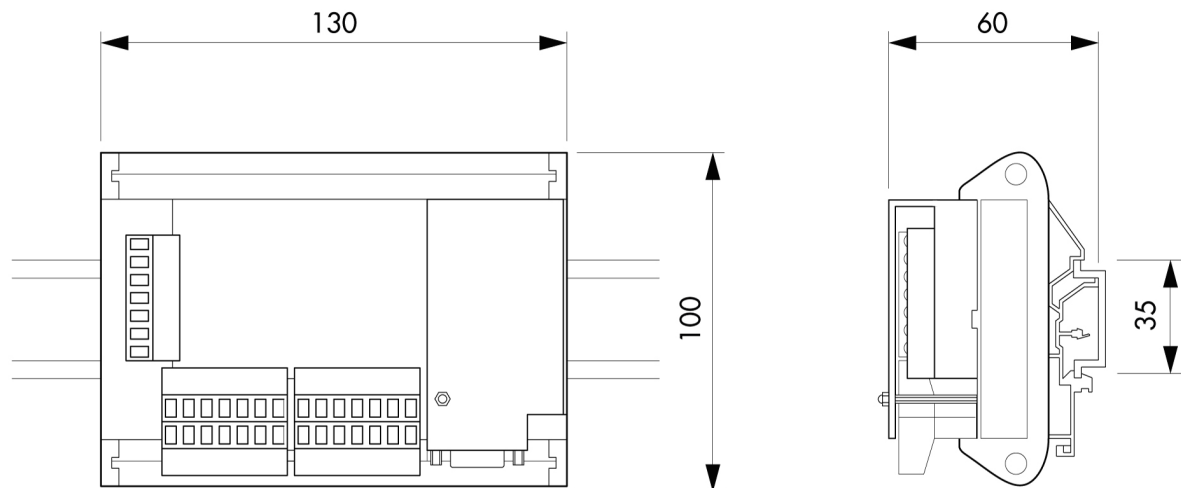


Pavone Sistemi
pesatura elettronica industriale

WEIGHING INSTRUMENTATION

weight transmitters

E LINK 3000



**SCIENCE
GATE**
Your Automation Partner



SCIGATE AUTOMATION (S) PTE LTD

No.1 Bukit Batok Street 22 #01-01 Singapore 659592

Tel: (65) 6561 0488

Fax: (65) 6562 0588

Email: sales@scigate.com.sg

Web: www.scigate.com.sg

Business Hours: Monday - Friday 8.30am - 6.15pm

Pavone Sistemi S.r.l. via Dei Chiosi, 18 • 20873 Cavenago Brianza (MB) Italy
Tel. 02 95339165 • Fax 02 9501252 • pavone@pavonesistemi.it • www.pavonesistemi.it
Tutti i dati possono essere soggetti a variazione senza preavviso

